

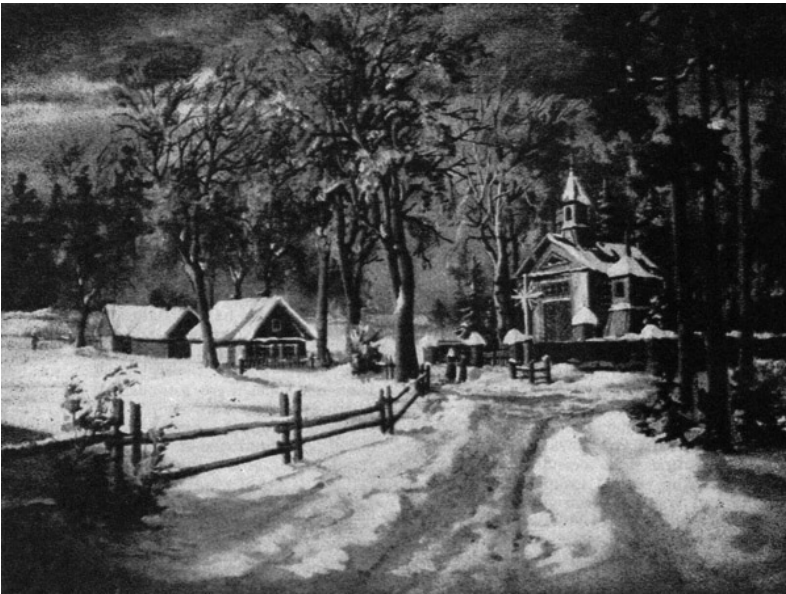
Illustrations



*Cathedral of Vilnius, erected in 1778
by architect Stoka-Gucevicius.*



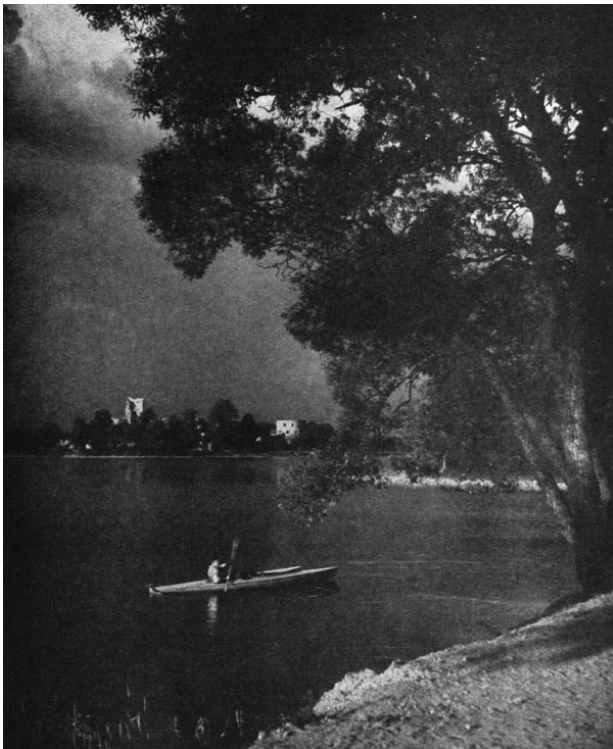
The Castle of Raudonė on the banks of Nemunas River, built in the 14th century.



Village near Teltiai. A painting by C. Janutas.



Lake shore in Eastern Lithuania.



Lake shore in Eastern Lithuania.